

Triple Disc Mower and Mower Conditioner Combination



www.KuhnNorthAmerica.com

GMD – Front & Rear Mounts Combinations

FC – Front & Rear Mounts Combinations



Invest in Quality®

GMD 3125 F / 3525 F / 8730 / 10030 FC 3125 DF / 3525 DF / 8830 D / 10030 D

MAXIMIZING OUTPUT. OPTIMIZING FORAGE.

Kuhn has developed new triple mower and mower conditioners to support you in the inevitable race for output. Farms have increasingly larger areas to harvest, optimal mowing periods are limited, and achieving a top-quality forage is essential. In these times, you can count on the performance, work quality and reliability of Kuhn's mowing technology.

ENSURE A REGULAR CUTTING HEIGHT

Superior ground adaptation is an absolute necessity to obtain a regular cut and clean crop on rolling ground and slopes. The wider the working width is, the more important this becomes.

HARVEST THE BEST OF THE PLANT

Kuhn large-width mowers have some common features to ensure that all of your forage is cut with high quality: Lift-Control hydro-pneumatic suspension, Optidisc® cutterbar, and on FC models the DigiDry® conditioner and more.

THE REFERENCE FOR RELIABILITY

From the Protectadrive® safety on the cutterbar to the hydraulic safety breakaway, it is no coincidence that Kuhn mowers and mower conditioners are the reference in the market.

Mowers and Mower Conditioners GMD and FC in brief:

Models	Working Width	Average Swath Width	Number of Discs
GMD 3125 F	10'2"	3'3" – 4'11"	7
GMD 3525 F	11'6"	3'3" – 4'11"	8
GMD 8730	26'9" – 28'7"	6'6" – 7'9"	2 x 7
GMD 10030	31' – 32'6"	9'2"	2 x 8
FC 3125 DF	10'2"	3'11" – 6'7"	7
FC 3525 DF	11'6"	3'11" – 6'7"	8
FC 8830 D	27'3" – 28'7"	4'9" – 8'	2 x 7
FC 10030 D	31' – 32'6"	6'1" – 10'4"	2 x 8



EXCELLENT GROUND ADAPTATION MEANS TOP-QUALITY FORAGE!



Kuhn is at your side to help you produce high-quality forage with minimum ash content. On the new triple mowers, special features are built in for improved adaption of ground contours, exceptional cut quality and uniform height of crop stubble.



FLEXIBLE FRONT UNIT THAT ADAPTS TO THE LAND

The frame of the front units integrates a suspension unit, enabling the cutting head a high freedom of movement to cut a large travel range! We are talking about an angular travel range of 30° and a vertical displacement of 27.5", while the ground pressure remains constant. Its ability to automatically adapt to field contours or unseen foreign objects is unmatched in the industry.



IMPRESSIVE TRAVEL RANGE OF REAR UNITS

The FC and GMD 10030 rear units follow virtually all ground contours.

- Pendulum-type articulation of unit
- Hydraulic lateral shifting up to 18" for improved overlapping
- Vertical travel range of nearly 18.5"
- Angular flexibility from +13.3° to -8.1° at 18" overlap

A GOOD MATCH!



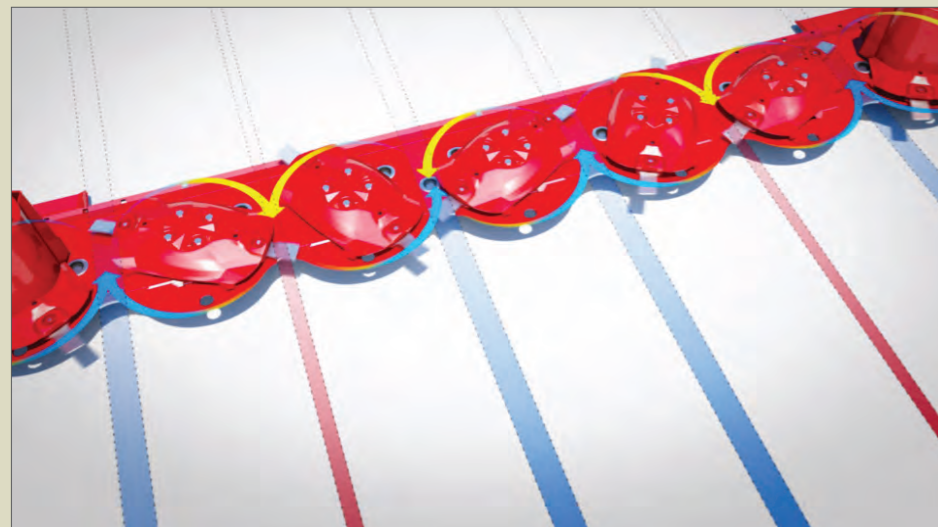
NO CROP LEFT UNCUT

For a clean and complete cut on slopes and in sharp turns on 10030 machines, each rear mower unit can be shifted laterally by 9" to create an increased overlap between the front and rear units. The driver can modify the working width during operation from the cab. This feature is a real benefit for tractors with wide wheels or operations with varying terrain.



A CLEAN & CONSISTENT CUT

The Kuhn Optidisc® cutterbar is an excellent example of how close cooperation of farmer's insight and manufacturer's engineering can generate real value-added solutions. It combines unmatched cut quality with great reliability and user comfort. Lubed-for-life and adapted to high horsepower tractors, it perfectly responds to the requirements of large farms and custom operators.



OPTIDISC CROP CONTROL

The innovative design offers exclusive differential disc spacing. Narrower spacing at **diverging discs (red)** provide greater knife overlap for cleaner cutting. Wider spacing at **converging discs (blue)** provides greater capacity and higher throughput.

OUTSTANDING CROP LIFT

The cutting discs and end cones provide high crop lift, allowing cut materials to quickly leave the cutterbar and enter the conditioner, especially in thick crop conditions.

PROTECTIVE SKIDS

Sticky crop conditions may cause some soil to accumulate in front of the cutterbar – but not with Optidisc! Its skids are designed to improve sliding and protect the crop stubble, therefore ensuring high-quality forage in difficult conditions.



FAST-FIT® KNIVES

Fast-Fit allows quick changing of knives with the use of a simple tool, yet still provides the optimum cut quality and knife life seen with the standard system. With Fast-Fit, you can achieve up to 50% time savings.



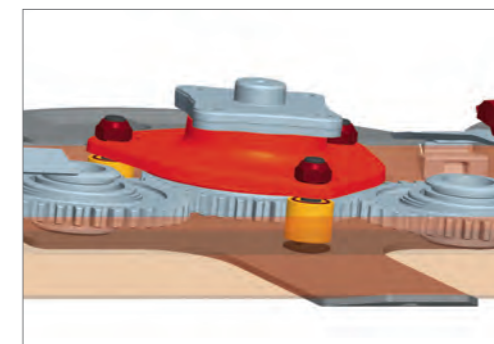
HIGH-END COMPONENTS: STRENGTHEN THE HEART OF THE CUTTERBAR

The disc bearing stations are fitted with **1** double-row angular ball bearings **2** Large-diameter gears made of forged steel with high machining precision: This feature ensures maximum strength which is that much more important should a disc hit an obstacle **3** Protectadrive® safety



ULTIMATE PROTECTION

Externally removable Protectadrive® disc bearing stations provide maximum reliability and quick service. They normally protect the cutterbar from damage if a major obstacle is struck in the field. The machined shaft guarantees a constant shear value to prevent nuisance shears or non-shearing, unlike others in the market.



EXCLUSIVE

EXTRA RIGIDITY WHERE IT COUNTS

Disc bearing stations are attached by bolts that pass through the entire cutterbar. This is an exceptionally strong and secure attachment with no risk of a mount being torn out of the cutterbar in case of shocks. The disc drive pinion is held precisely in place, all resulting in excellent reliability and reduced maintenance costs.



EXCLUSIVE

PATENTED ATTACHMENT OF CUTTERBAR TO CHASSIS

Shock absorbers are now integrated in the connection between the cutterbar and chassis. They efficiently absorb shocks during work when driving quickly. This helps improve service life.

GENUINE KUHN PARTS

No part better fits a Kuhn machine than an original Kuhn part

Here at Kuhn, we produce spare parts built to last in our very own foundries, our forges and our ultra-modern production facilities. You can trust in our longstanding know-how, based on almost two centuries of experience. With Kuhn North America Parts, you can be assured of the highest quality parts and customer service in the agriculture equipment industry. Seven distribution centers, located strategically throughout North America, ensure that Kuhn, Kuhn Knight and Kuhn Krause dealers have access to parts and assistance so you can get back in the tractor.



INVEST IN QUALITY®



EASY ACCESS FOR SERVICING

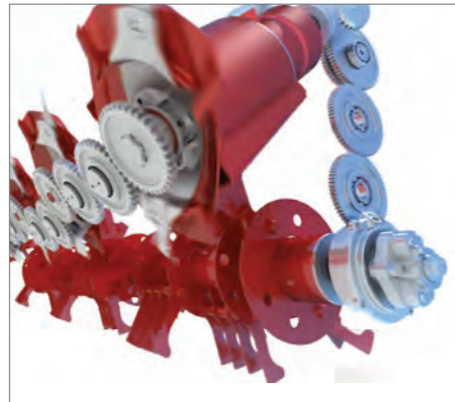


UNIFORM CROP CONDITIONING



DIRECT DRIVE DESIGN

The direct drive design to the conditioner provides easy access for servicing and fully eliminates belts. Reliability is greatly improved when working in longer crops such as ryegrass.



BUILT-IN ROTOR PROTECTION

To help prevent damage to the conditioner gearbox in the unlikely event of an overload or ingestion of a large foreign object, the shear bolt hub allows the operator to clear the obstruction from the conditioner, quickly rotate the inner hub into position, install the new shear bolt and return to mowing.



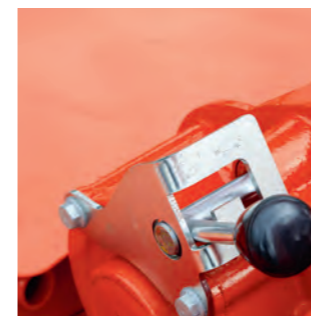
MAINTENANCE-FREE DRIVE SHAFT

Unlike competitive models that require daily greasing, the drive shaft to the cutterbar uses maintenance-free U-joints. These joints reduce overall maintenance and eliminate excessive wear from improper maintenance.



DIGIDRY® FINGER CONDITIONER

The DigiDry finger conditioner provides consistent drying of grasses and legumes. The specially shaped fingers create a highly effective air dam, gently lifting the crop and directing it to impact with the conditioning hood. This design helps ensure consistent throughput for a uniform windrow.



CONDITIONING ADJUSTMENTS

Easily adjust between two rotor speeds, 755 or 1,000 rpm, via a handle on each unit. Single-point conditioning intensity adjustment speeds up and adapts to differing crop types or volumes. Conditioning hood adjustment is also very simple as it is at one single point per head.



MODERN STYLE MEETS GREAT PERFORMANCE

The new Kuhn front mower and mower conditioner features many new functional characteristics:

- Special frame designed for unmatched ground adaptation
- Maintenance-free Optidisc® cutterbar for optimum cutting
- Protectadrive® safety and Fast-Fit® knife system
- Hydro-pneumatic Lift-Control suspension of the mowing unit
- Easy adjustments for increased user comfort
- Conditioner rotor with pivoting steel fingers (*FC Only*)

EXCLUSIVE

A NEW SLEEK LOOK

The new Kuhn front mowers feature an attractive, functionally designed headstock. The compact frame, shaped like a hammerhead shark, offers improved visibility for the operator. It also subtly integrates

the suspension unit, which is responsible for an exceptionally high ground adaptation. The two support arms are positioned a distance apart from one another, thus ensuring that the mower runs stable.



EXCEPTIONAL TERRAIN FOLLOWERS

Front mowing units have to remain flexible enough to smoothly adapt to all terrain changes they may encounter. At the same time they are often subject to higher stress. The Kuhn front mowers are designed for this purpose, featuring a pendulum-type articulation of the mowing unit and significant adaptability characteristics. They can oscillate left to right at an angle of up to 30° and cover a vertical travel range of 27.5".

CONVERGING DRUMS

The converging drums allow for a smooth swath formation and for crop to be made narrow enough to prevent tractor tire run-over. Drums are powered via shafts with our exclusive Digidrive® power coupler to ensure full power in all mowing conditions (*GMD Models Only*).



WIDE AND MODULAR OVERLAP

For a clean cut on slopes and bends, the overlap between the front and rear units can be adjusted hydraulically between 12" and 18" (depending on the model combination) – even while driving. This is a real benefit for tractors with wide wheel spacing or large wheels.



FLEXPROTECT™: FLEXIBLE PROTECTION

On encountering an obstacle, the Kuhn FlexProtect side covers made of polythene material bend without breaking or damaging the mower. After the obstacle's passage, the material automatically returns back to its original shape.



GMD 8730

SIMPLE TO USE AND EASY ON FUEL CONSUMPTION

High productivity with minimal power needed: This is the main characteristic of this triple combination. With a cutting width of 26'9" – 28'7" when combined with the front mower, the GMD 8730 can more than double the productivity of traditional mounted or trailed disc mowers. Weighing less than 3,970 lbs, it can be used (in combination with a GMD 3125 F) with tractors starting at as little as 120 hp. With the lift control hydro-pneumatic mowing unit suspension along with non-stop break-away protection and the maintenance-free Optidisc® cutterbar, the GMD 8730 features convincing solutions for increased comfort and savings.



INDIVIDUAL LIFTS FOR MOWING UNITS COME STANDARD

When working, you only have to handle one valve to lift the front-mounted mowing unit and one for the rear units. The possibility of lifting both rear mowing units individually is a big advantage on wedge-shaped fields and allows quick and easy maneuvers. The unit is put into transport position by activating a two-way hydraulic valve.



THREE OVERLAP SETTINGS TO MEET YOUR NEEDS

Adjustment of the cutterbar position on each mowing head allows the operator to match the mowing width to the working conditions. This provides ample overlap to prevent skipping crop (such as when mowing on steep hillsides). The machine is compatible with the GMD 3125 F or 3525 F. With the GMD 3525 F, maximum width can be selected, regardless of the terrain.



SPACE-SAVING STORAGE

Keep precious machine space open with the standard vertical storage feature.



GMD 10030 FC 8830 / 10030 D

TRIPLE THE OUTPUT WITHOUT TRIPLING COSTS

The race for high output is never ending. Farms have increasingly larger areas to harvest, optimal mowing periods are limited and producing top quality forage is essential. In these highly stressful times, producers count on reliable and efficient mowers that cut cleanly and help produce high quality forage without impurities.



SEPARATE HYDRAULIC LIFTING OF UNITS

The possibility of lifting both rear mowing units individually via hydraulic cylinders is a big advantage on wedge-shaped fields and permits quick and easy maneuvers. This can be done directly from the cab. At the same time the system ensures a reduced ground pressure: beneficial to plant regrowth, cutterbar wear and power requirements.



TRANSPORT WITH EASE

Transporting a triple combination in upward folded position leaves it closer to the tractor and allows the machine to have:

- Compact dimensions on the road (reduced length)
- A center of gravity close to the tractor
- A reduced load on the rear tractor axle



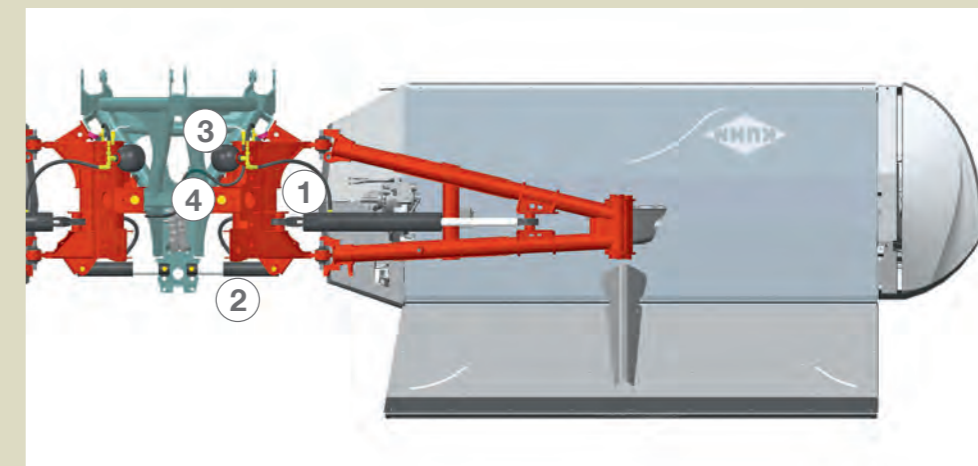
PRACTICAL STORAGE POSITION

Two parking stands are delivered as standard with the machine. They enable you to park the machine in folded position, this considerably saves storage space.

QUALITY CUT. EVERY DAY. EVERY CROP.



KUHN'S KEY FOR A CLEAN CROP: LIFT-CONTROL



CLEVER, YET SIMPLE DESIGN

Lift-Control is much more than just a suspension system with a nitrogen accumulator replacing the traditional spring. The main advantage of the Lift-Control system is derived from the exclusive way in which kinetic forces that act on the cutterbar are utilized. Kuhn engineers have succeeded in making a dynamic suspension system as opposed to the passive system most commonly used.

HOW DOES LIFT-CONTROL WORK IN PRACTICE?

The particular kinematics of Kuhn triple mowers integrate a suspension cylinder for lightening the mowing unit (1) a breakaway cylinder (2) an accumulator with adjustable pressure (3) and a pivot axis well positioned and close to the machine center. (4) The appropriate suspension adjustment limits mixing impurities in the crop and reduces the cutterbar ground pressure: less fuel consumption, skid wear and crop stubble protection.

Active Non-Stop Safety Breakaway



SIDE COVER DAMAGE – A THING OF THE PAST

On encountering an obstacle, the Kuhn FlexProtect side covers made of polythene material bend without breaking or damaging the mower. The material then returns back to its original shape. They fold automatically without having to use an additional tractor valve.



COMFORTABLE ADJUSTMENTS FROM THE CAB

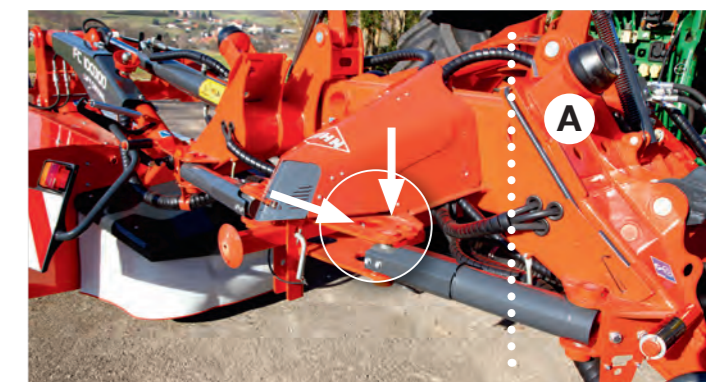
The KFA10 terminal facilitates machine adjustments. The following functions can be comfortably controlled from the cab:

- Folding/unfolding
- Independent lifting of the mowing units
- Ground pressure of rear mowing units



MOW WITH YOUR MIND AT EASE!

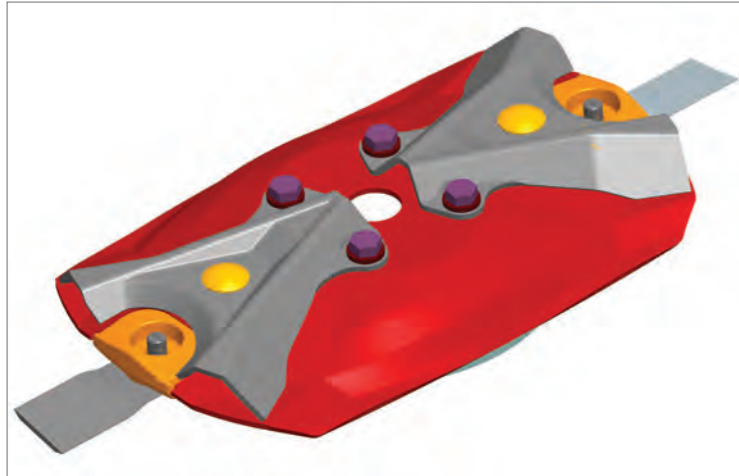
No farmer can afford to damage his mower during the peak of the season because of an unnoticed obstacle or maneuvering error. On the new rear units, the mowing unit pivots rearward around the bracing pin when hitting an obstacle. In this moment, oil is transferred towards the suspension cylinder. The resulting pressure increase facilitates the mowing unit raising to clear the obstruction. Return to the initial working position is carried out nonstop.



PROTECTING YOUR INVESTMENT

- The safety system remains efficient even if an obstacle hits the inner disc of the mowing unit, as the pivoting point of the frame arm (A) is positioned far inside.
- An independent suspension on each mowing unit prevents the opposite mowing unit from being accelerated forward when the other side clears the obstacle.
- The hydraulic breakaway can be adjusted depending on the cutting conditions. The cylinder is fixed on two points (arrows): The second fixation allows to increase the force required for the breakaway, for example when working at high speed in rough conditions.

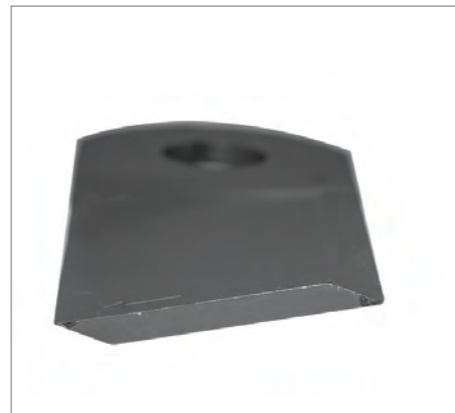
OPTIONAL EQUIPMENT



LIFTER DISCS
Recommended only for sorghum or other hard feeding crops.



WORK LIGHTS (FRONT MOUNT MODELS ONLY)
For added light when mowing at night.



HD KNIVES
Available through Kuhn Parts, the HD knives provide increased longevity and durability when mowing in rocky and other difficult conditions.

Knives must be used with HD retaining studs and nuts.

Model Specifications

	GMD 3125 F	GMD 8730	GMD 3525 F	GMD 10030
Working Width	10'2" (3 m)	26'9" – 28'7" (8.2 m – 8.6 m)	11'6" (3.5 m)	31' – 32'6" (9.4 m – 9.9 m)
Hitch Type	3-Point, Front Mounted (Cat. 2)	3-Point, Cat. 2 and 3	3-Point, Front Mounted (Cat. 2)	3-Point (Cat. 3 & 4N) QH Compatible
Optidisc® Cutterbar	Standard			
Total Number of Discs	7	2 X 7	8	2 X 8
Blade Retention System	Fast-Fit®			
Removable Protectadrive® Disc Bearing Stations	Standard			
Suspension	Lift Control with Torsion Bar Assist	Lift Control – Hydro- Pneumatic Suspension System	Lift Control with Torsion Bar Assist	Lift Control – Hydro-Pneumatic Suspension System
Average Swath Width	3'3" – 4'11" (1 m – 1.5 m)	6'6" – 7'9" (1.8 m – 2.2 m)	3'3" – 4'11" (1 m – 1.5 m)	9'2" (2.8 m)
Transport Width	9'10" (3 m)	9'9" (3 m)	11'5" (3.5 m)	11' (3.4 m)
Transport Height	6'7" (2 m)	12'2" – 13'1" (3.7 m – 4.1 m)	6'7" (2 m)	12'9" (3.9 m)
Road Lights and Signaling	Standard			
PTO Speed (RPM)	1,000 rpm			
Primary PTO	CW or CCW 1-3/8" – 21-Spline	1-3/4" – 20-Spline	CW or CCW 1-3/8" – 21-Spline	1-3/4" – 20-Spline
Free Wheel	Standard			
Minimum PTO Power Requirement	75 hp (56 kW)	120 hp (90 kW) with Front Mount	85 hp (63 kW)	150 hp (112 kW) with Front Mount
Required Tractor Connections	1 DA	1 SA and 1 DA	1 DA	2 DA
Machine Net Weight (Approx.)	2,440 lbs. (1,107 kg)	3,924 lbs. (1,780 kg)	2,600 lbs. (1,179 kg)	5,180 lbs. (2,350 kg)

Model Specifications

	FC 3125 DF	FC 8830 D	FC 3525 DF	FC 10030 D
Working Width	10'2" (3.10 m)	27'3" – 28'7" (8.2 m – 8.6 m)	11'6" (3.5 m)	31' – 32'6" (9.4 – 9.9 m)
Hitch Type	3-Point Front Mounted (Cat. 2)	3-Point (Cat. 3 & 4N) QH Compatible	3-Point Front Mounted (Cat. 2)	3-Point (Cat. 3 & 4N) QH Compatible
PTO Speed (RPM)	1,000 rpm			
Primary PTO	CW or CCW 1-3/8" – 21-Spline	1-3/4" – 20-Spline	CW or CCW 1-3/8" – 21-Spline	1-3/4" – 20-Spline
Optidisc® Cutterbar	Standard			
Total Number of Discs	7	2 X 7	8	2 X 8
Blade Retention System	Fast-Fit®			
Removable Protectadrive Disc Bearing Stations	Standard			
Non-Stop Safety Breakaway Mechanism	–	Standard	–	Standard
Cutting Height	1 1/4" – 3 1/4" (3 cm – 8.1 cm)			
Suspension	Lift Control with Torsion Bar Assist	Lift Control – Hydro-Pneumatic Suspension System	Lift Control with Torsion Bar Assist	Lift Control – Hydro-Pneumatic Suspension System
Average Swath Width	3'11" – 6'7" (1.3 m – 2.0 m)	4'9" – 8' (1.5 m – 2.4 m)	3'11" – 6'7" (1.2 – 1.6 m)	6'1" – 7'10" (1.9 – 2.4 m)
Rotor Width	8'1" (2.5 m)	9'2" (2.8 m)	8'1" (2.5 m)	9'2" (2.8 m)
Rotor Speed (RPM)	780 or 1,000 rpm	755 or 1,000 rpm	780 or 1,000 rpm	755 or 1,000 rpm
Conditioning System	Finger			
Transport Width	9'10" (3 m)	9'8" (2.95 m)	11'5" (3.5 m)	11' (3.4 m)
Transport Height	6'7" (2 m)	13'1" (4 m)	6'7" (2 m)	13'1" (4 m)
Road Lights and Signaling	Standard			
Friction Slip Clutch	Standard			
Free Wheel	Standard (Integrated Lateral Gearbox)			
Minimum PTO Power Requirement	95 hp (50 kW)	225 hp (168 kW) with Front Mount	105 hp (78 kW)	250 hp (187 kW) with Front Mount
Electronic Monitor	–	Standard	–	Standard
Required Tractor Hydraulic Connections	1 DA	2 DA	1 DA	2 DA
Machine Net Weight (Approx.)	2,910 lbs. (1,320 kg)	6,680 lbs. (3,030 kg)	3,064 lbs. (1,340 kg)	7,190 lbs. (3,261 kg)

COMPLEMENTARY PRODUCTS

MORE PRODUCTS TO MEET YOUR NEEDS

With over 700 models of equipment, we have the most complete implement line in the industry. Whether you have a small or large operation, we have a broad range of models and options to help fit your diverse needs.



1. Tedders
2. Mergers
3. Round Balers
4. Large Square Balers
5. TMR Mixers
6. Manure Spreaders

For more information about your nearest Kuhn dealer and other Kuhn products, visit our website at

www.KuhnNorthAmerica.com



Visit our YouTube channel to watch our latest product videos.

KUHN NORTH AMERICA, INC.

Corporate Headquarters

1501 West Seventh Avenue - Brodhead, WI 53520

Phone: (608) 897-2131 Fax: (608) 897-2561

Information given in this document is only for informational purposes and is non-contractual. Our machines are in compliance with North American safety standards. In our literature, and for improved illustration of certain details, some safety devices may not be in operating position. When operating these machines, these devices must be operated in accordance with the requirements indicated in the operator's manuals and assembly manuals. We reserve the right to change any designs, specifications or materials listed without further notice. Machines and equipment in this document can be covered by at least one patent and/or registered design. Trademarks cited in this document may be registered in one or several countries.

Your Kuhn dealer



www.KuhnNorthAmerica.com

Find us on

